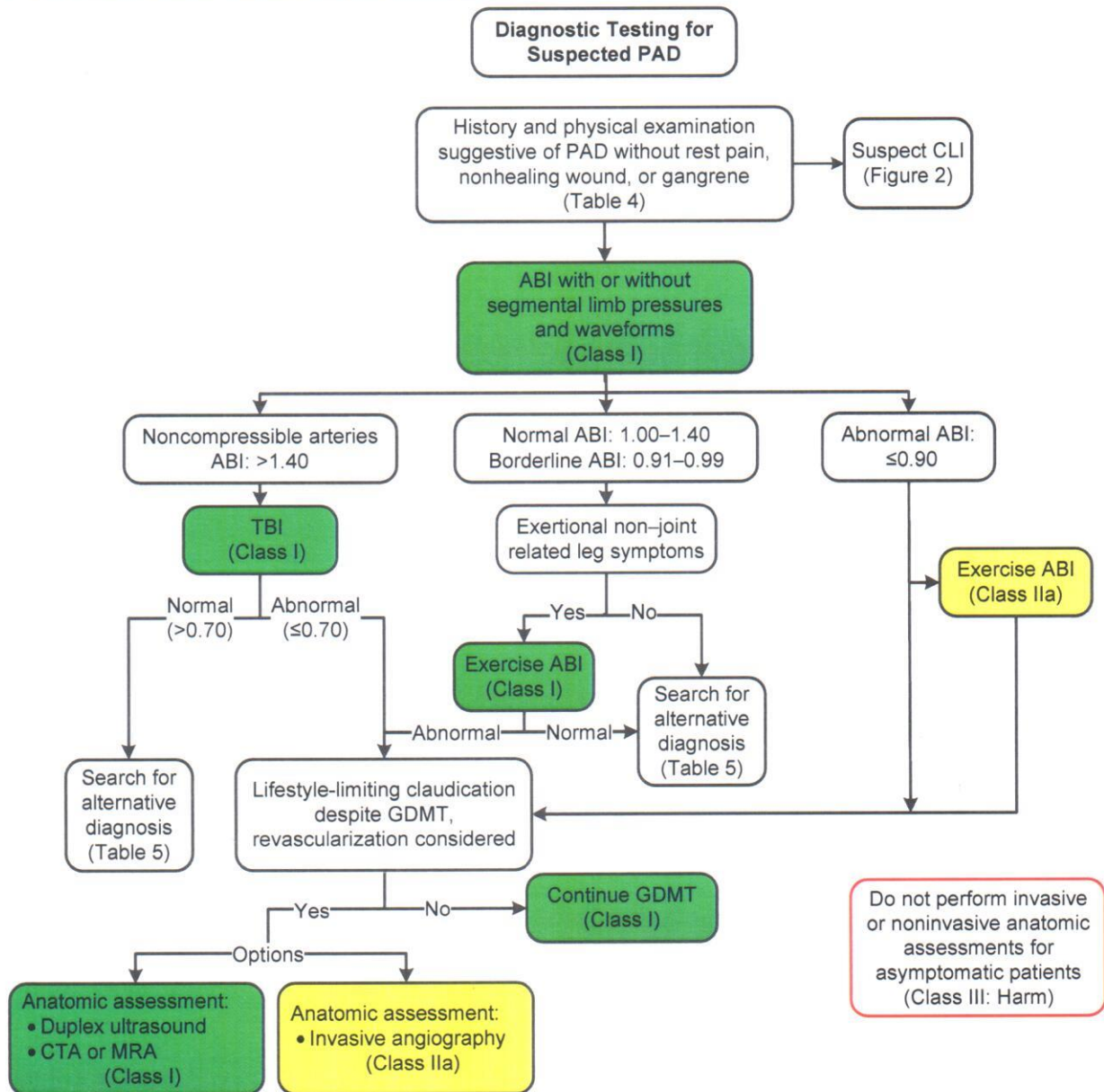
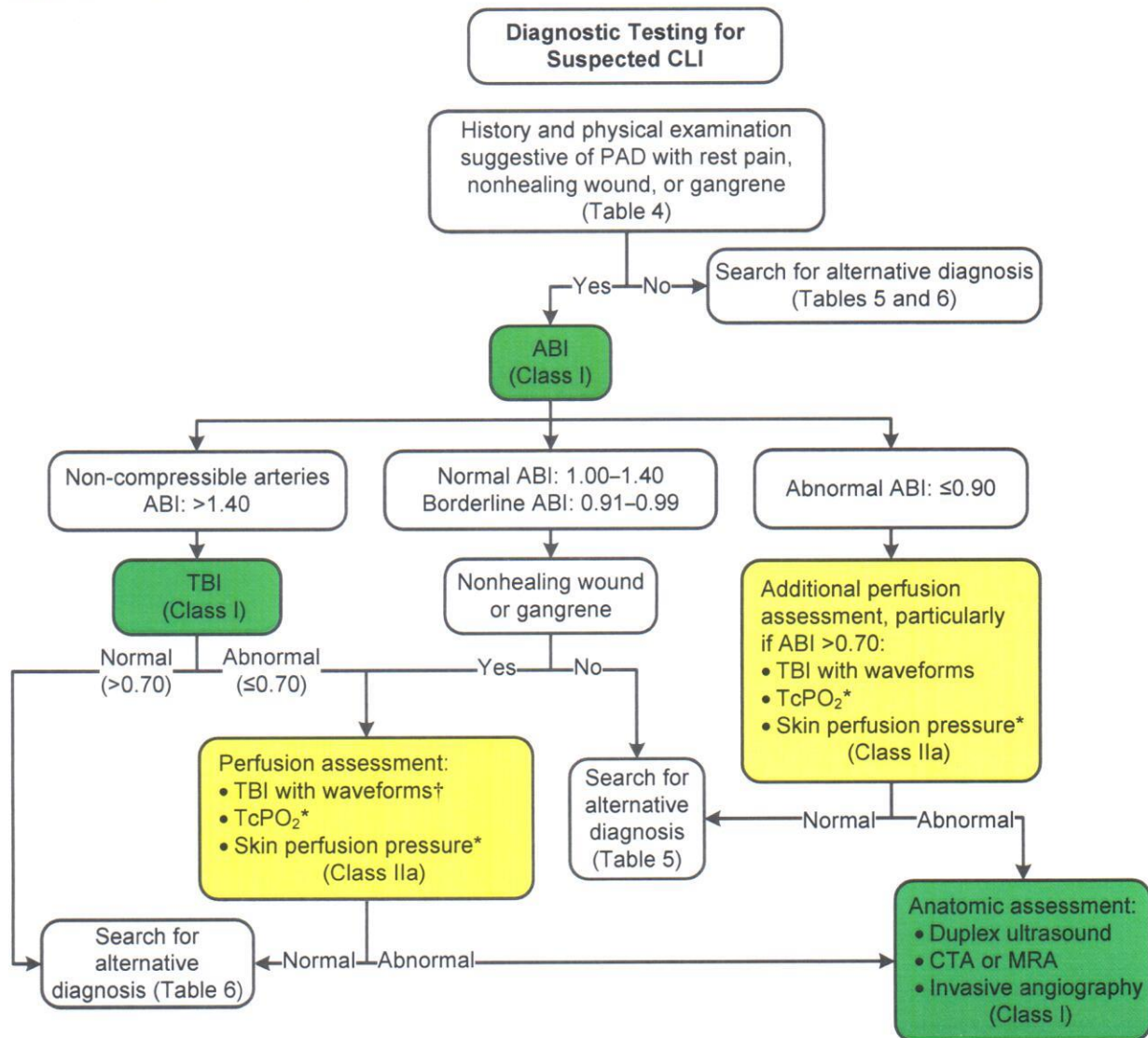


Figure 1. Diagnostic Testing for Suspected PAD



Colors correspond to Class of Recommendation in Table 1. ABI indicates ankle-brachial index; CLI, critical limb ischemia; CTA, computed tomography angiography; GDMT, guideline-directed management and therapy; MRA, magnetic resonance angiography; PAD, peripheral artery disease; and TBI, toe-brachial index.

Figure 2. Diagnostic Testing for Suspected CLI



Colors correspond to Class of Recommendation in Table 1.

*Order based on expert consensus.

†TBI with waveforms, if not already performed.

ABI indicates ankle-brachial index; CLI, critical limb ischemia; CTA, computed tomography angiography; MRA, magnetic resonance angiography; TcPO₂, transcutaneous oxygen pressure; and TBI, toe-brachial index.